



Our Values

We promote 6 key values:

- kindness
- respect
- aspiration
- resilience
- integrity
- collaboration

Our values are promoted through all our work in school: curriculum; assemblies; social times. Children are encouraged to promote the values in all their work habits and in their interactions with others.

Within our school community we have the expectation that everyone promotes aspiration and ambition; encourages others to learn and be the best they can be; celebrates all achievement and recognises its importance to the individual.

Our aims are that every child will:

- Develop self-confidence and self-esteem.
- Have an understanding that hard work and perseverance are essential to success.
- Master the core skills in English, mathematics, science and computing, develop independence and a love of learning.
- Adopt a healthy lifestyle.
- Know about and appreciate different cultures and beliefs and to be supportive, fair and free from discrimination.





Breakfast Club

Open from 8:00 a.m. children may take part in breakfast club daily for a small charge. They receive cereal, toast and a drink and can play structured games until school starts at 8:45 a.m.

Extra Curricular Clubs

We run a wide variety of after school clubs, details of which are circulated at the start of every half term. Most clubs finish at 4.00 p.m.

Access to School

All children and parents enter the school through the playground gate. Children should not arrive at school before 8.45 a.m. unless they are taking part in breakfast club. Children may enter the building at any time from 8.45 a.m. when staff will be in their classrooms. Attendance registers are taken promptly at 8.55 a.m.

Absence Procedure

If a child is ill, parents or carers must telephone the school office on the day of their absence; before 9.00 a.m.

Attendance

Good attendance and punctuality is important.

Children may not take holidays in term time unless there are exceptional circumstances. A full copy of our policy can be found on the school website or may be collected from the school office.

We monitor attendance daily and parents are contacted when a child's attendance falls below 96%.

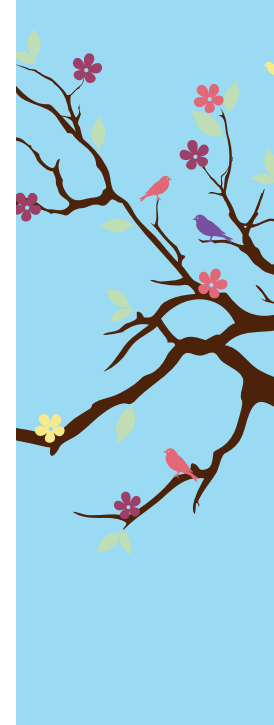
The Attendance and Welfare service for the local authority will issue penalty notices for any pupils whose attendance is unacceptably low (see attendance policy).

Punctuality

Children should be in class when the register will be taken. Children arriving after this time will be marked late.

We are legally required to give the names of children who are persistently late to the Attendance and Welfare service.





Lunches

All children in reception, year 1 and year 2 are entitled to a free school lunch. Children can choose to either bring a packed lunch or have a school dinner. Children are given a choice of three options for their meal. We encourage parents to pay for school meals through the schools cashless system on a weekly basis with payment being made on Mondays.

Communication

Our weekly newsletter contains a detailed record of school news and events. The newsletter is posted on our excellent school website: www.litherlandmoss.co.uk and sent to parents and carers on our parent app.

Any concerns should be brought first to the attention of the class teacher.

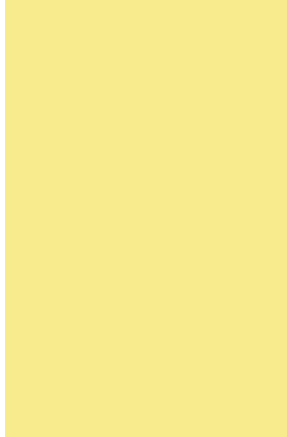
If parents or carers need to speak to a class teacher, it is usually best to make an appointment.

It may be possible for parents or carers to speak briefly to the headteacher or learning mentors before school. Similarly we can offer appointments if you need more time for discussion.

We operate a system of contacting parents/ carers by parent app to inform them of changes to arrangements or to issue reminders.

It is very important, therefore, that we hold current mobile telephone numbers on our records and we are informed immediately if numbers change.





Uniform and Belongings

Children are proud of belonging to Litherland Moss and our school uniform reflects this.

Our uniform is as follows:

- grey trousers, skirt or shorts
- white shirt and red/ grey tie
- white polo shirt
- grey jumper or cardigan
- grey socks
- black shoes only – not trainers and no high heels
- red/ white summer dress for girls

Branded jumpers, cardigans, polo shirts, ties and reading book bags are all available from Paul's place. Alternatively parents can choose to purchase non branded uniform from local shops and supermarkets.

For physical activity:

- white t-shirt
- black shorts
- pumps
- tracksuit if working outside

Children's hair

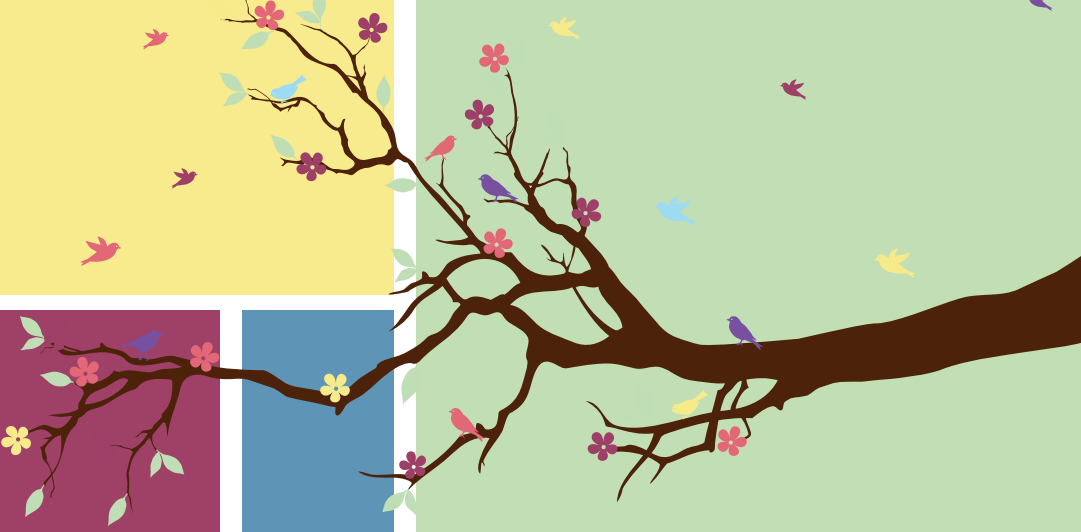
Children's hair should be neat and tidy at all times. Children with long hair are required to wear it tied back using school coloured accessories.

Children are not allowed styles of a generally inappropriate nature for school e.g. unnaturally coloured or with shaved lines or symbols.

Jewellery and make-up

No jewellery should be worn in school, with the exception of watches and stud earrings. Stud earrings must be removed for swimming and P.E.

Nail polish or make-up is not allowed.



School Equipment

Children do not need to bring their own equipment into school other than a book bag.

Naming of uniform and lost property

Please make sure that all uniform is clearly named.

The school accepts no responsibility for items that are lost or damaged unless it can be proved that the damage has been caused wilfully and deliberately.

Admissions

We admit nursery children after their third birthday. Children start reception class in the September following their fourth birthday. The school operates the admission policy recommended by Sefton's Local Authority.

The full admission policy can be found on the school website.

Appointments to view the school are warmly welcomed. Please contact the school office at anytime.

Parental Partnership

We believe that children will be happy and successful learners in school if parents and carers are fully involved in all aspects of school life.

Parents' evening is an important part of this process. There is an opportunity for parents and carers to meet with class teachers in the autumn and spring terms. In the summer term there is an opportunity to discuss annual reports.

Assistance with reading and homework is most important. From time to time we organise parent workshops to give support for extending and encouraging learning at home. Details of class homework procedures can be found on the school website. Children in all classes are encouraged to read at home on a daily basis.





Curriculum

Our curriculum is based on the national curriculum for all schools.

All classes perform a parent assembly annually. These performances celebrate the learning that has taken place at the end of a topic.

As far as possible staff organise a trip or visit to go alongside each curriculum based topic.

Sport

Children play a wide range of sports as part of the P.E. curriculum: football, netball, rugby, hockey, gymnastics, dance, swimming, athletics, rounders and cricket for example. Children may also take part in sports as part of our extra-curricular programme.



R.E. and Collective Worship

R.E. is conducted according to the 1988 Education Reform Act. We use Sefton's agreed syllabus that teaches about Christianity, other major religions and their festivals as well as consideration of feelings, attitudes and values.

Rainbow groups

From year 2, children belong to a rainbow group, each of which comprises mixed age children from all classes. Children take part in rainbow sessions on Friday afternoons and in these groups they learn about our school values, equality, diversity and belonging.

Each rainbow group is led by a year 6 leader.

Relationships and Sex Education

Sex Education is taught through a planned programme of personal, social, health and citizenship education. In years five and six children are taught about the subject in more detail with support of the school nurse. Parents will have opportunities to discuss this planned programme with the class teacher before it is delivered to the children.



Special Educational Needs and Disability

Our aim is for all children to fulfil their potential in school. We aim to challenge and encourage all children to perform to the best of their ability. We have a clear policy for special educational needs and have very good support in place in order to meet every child's individual needs.

Behaviour and Discipline

Children learn in a calm and secure environment. In order to achieve this, we have a very clear behaviour policy that strongly emphasises the importance of good behaviour. Each class has its own set of rules devised primarily by the children. Teachers use a range of stickers, certificates and letters to take home to reward good behaviour. Behaviour and anti-bullying policies are available on request or on the school website.

In an effort to reward children meeting our behaviour expectations we operate systems where we record the names of children who keep our rules and we reward children who we notice showing good manners and citizenship. Rewards and prizes are given to children who are regularly caught behaving well.

Where a child has a behavioural need we will work with parents and external agencies where appropriate.

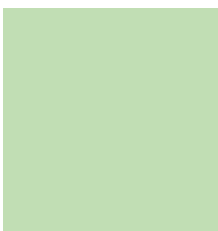
Cycling to School

Children are welcome to come to school on their bicycle or scooter. Cycles and scooters can be stored safely at the back of the school.

Children take safe cycling training in Year Five.

Health and Safety

A safe and secure school is always a priority. We aim to ensure that the environment in which your child works and plays is continuously monitored for any potential dangers. The resources committee of the governing body helps to monitor and achieve this.



Administering Medicine

If a child is on a course of medication that requires a prescribed medicine to be taken during the school day (e.g. at lunchtime) a parent or other authorised adult can administer it. Forms are available from the office.

Internet and E-mail

Our policy on children's use of the internet is available on request or on the school website.

Use of Images

A letter is issued in September whereby parents/guardians who do not want their child's name or image to be used in school, on the internet or in the press are given the opportunity to advise us of this.

Charging for School Activities

We ask for voluntary contributions to help to fund certain activities such as educational visits.

Where educational visits take place beyond and/or outside school hours (such as residential trips) we do charge for them.

A full copy of the school's charging policy is on the school website.



Complaints Procedure

If a parent or carer has a concern about anything relating to education and/or welfare, then the first reference is usually the class teacher. Having done this concerns may then be brought to the attention of the headteacher.

A full copy of the school's complaints policy is available on the school website.